



Fair testing



research



Observation over time

# PLANTS



Pattern seeking



Identify and classify



Problem solving

**Lesson 1** Describe the function of different plant parts.

What is the function of the stem?



Chlorophyll, photosynthesis, UV light, xylem, stomata.

**Lesson 2.**

Compare the effects of different factors on plant growth.

How did you make your test fair?



Nutrients, nursery, fertiliser, potassium, stunted.

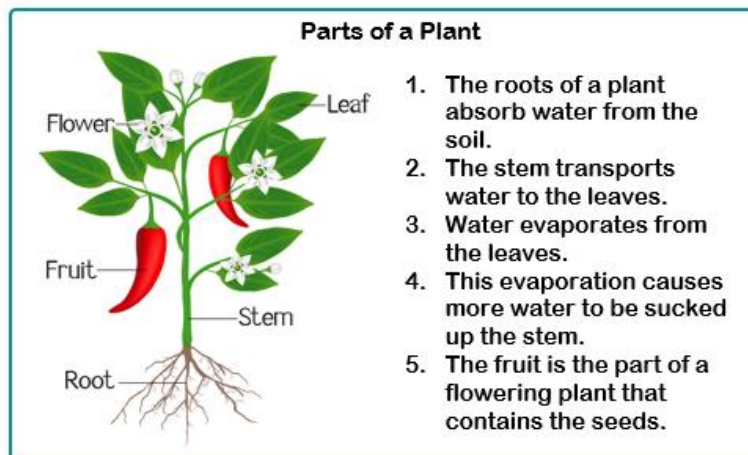
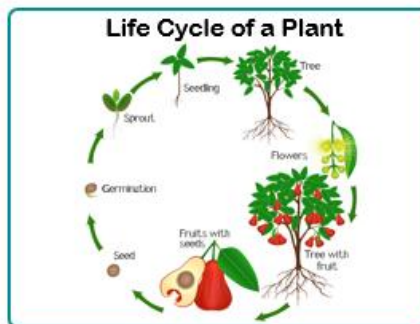
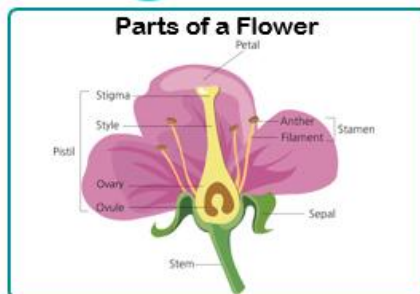
**Lesson 3** Observe how seeds grow

What does a seed produce first?

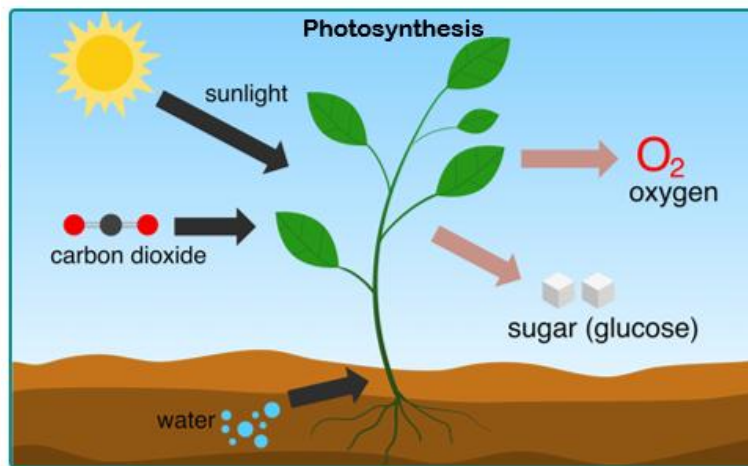


Seeds, growth, measure, factors, plant

What do different parts of a plant do?



1. The roots of a plant absorb water from the soil.
2. The stem transports water to the leaves.
3. Water evaporates from the leaves.
4. This evaporation causes more water to be sucked up the stem.
5. The fruit is the part of a flowering plant that contains the seeds.



**Careers connected this topic** conservation scientist, florist, organic farmer

Year 3

Spring 1

**Lesson 4** investigate the way water is transported in plants.

What is the function of the roots?



Stomata, transpiration, xylem, absorb, phloem.

**Lesson 5** Pollination and seed dispersal.

Why is pollination so important?



Nectar, pollen, pollinator, seed dispersal, pollination

**Lesson 6**

Can you explain all you have learned from this topic?

Vocab-all words from previous lessons.