

Prevent

Safeguarding is everyone's responsibility

Please speak to the Designated Safeguarding Lead:
Hannah Pallôt or Deputy Designated Safeguarding Lead:
Rachel Heffer immediately with any concerns.

MARU: 0300 1231 116 LADO: 01872 326536

What is Prevent?

Prevent is 1 of the 4 elements of CONTEST, the UK government's counter- terrorism strategy and aims to stop people becoming terrorists or supporting terrorism. The three main Objectives of Prevent are:

- 1) Tackle the causes of radicalisation and respond to the ideological challenge of terrorism.
- 2) Safeguard and support those most at risk of radicalisation through early intervention, identifying them and offering support
- 3) Enable those who have already engaged in terrorism to disengage and rehabilitate

Who is Prevent for?

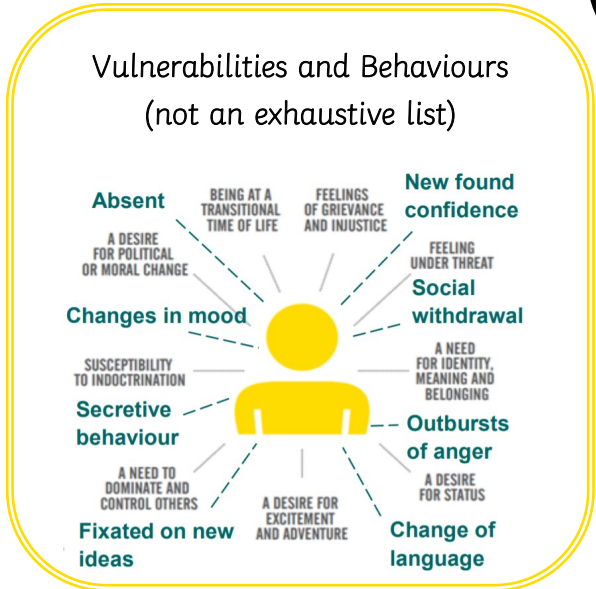
Prevent initiatives tackle both the causes and risk factors that can lead someone to become radicalised. It directly supports those who are at risk through early intervention, is resourced to risk and addresses all forms of terrorism and extremism. Prevent works in a similar way to other safeguarding processes designed to protect individuals whereby the level of intervention increases with the level of risk. Under the Prevent Duty all public sector agencies have a responsibility to ensure their staff, service providers and volunteers have a good understanding of the risk, are trained to recognise radicalisation and associated behaviours and how to report concerns.

What is Radicalisation?

Radicalisation is the process by which a person comes to support terrorism and in some cases then participates in terrorist activity. There is no one process or indicator of when a person might move to adopt violence in support of extremist ideas. The process is different for each individual and can take place over an extended period or a short time frame Extremism is defined as, vocal or active opposition to British values, including democracy, the rule of law, individual liberty and mutual respect and tolerance of different faiths and beliefs. It also includes calls for the death of members of the armed forces here or abroad.

What should you do if you have a concern?

NOTICE -CHECK -SHARE If you notice a change in an individual that concerns you, in that they may be vulnerable to radicalisation, speak to Hannah Pallôt (DSL) or Rachel Heffer (DDSL) who will complete a prevent risk assessment (found in appendix E) This may lead to a Channel referral.



What is Channel?

Channel is an voluntary, multiagency process designed to safeguard vulnerable people from being drawn into violent extremism or terrorist behaviour. Channel is chaired by the local authority and works with multi-agency partners to collectively assess the risk to an individual, decide whether an intervention is necessary and develop an appropriate support package for each referral.

**Prevent is the initiative;
 Channel is the referral
 process**