

Careers linked to this topic
 botanist, horticulturalist,
 gardener, illustrator, farmer,
 landscaper

Plants



What are the main parts of a
 plant or tree?

Year 1 - Wagtails
 Summer 1

Lesson 1 Understand seeds grow into plants
 What might happen to the seed?
 Plant seed and explain the process.
 (REVIEW: identify and classify) predict,
 plant, tree, seed, oak

Lesson 2 Identify the parts of a plant
 What are the basic parts of a plant
 and tree?
 Identify and label parts of a plant.
 (REVIEW: using observations to answer
 questions) flower, root, leaf, petal, stem

Lesson 3 Group plants according to
 their features
 How do different plants grow in the
 same environment?
 Sort different plants (colour wheel)
 (REVIEW: using observations and ideas
 to answer questions) weed, dandelion,
 daisy, wild, buttercup

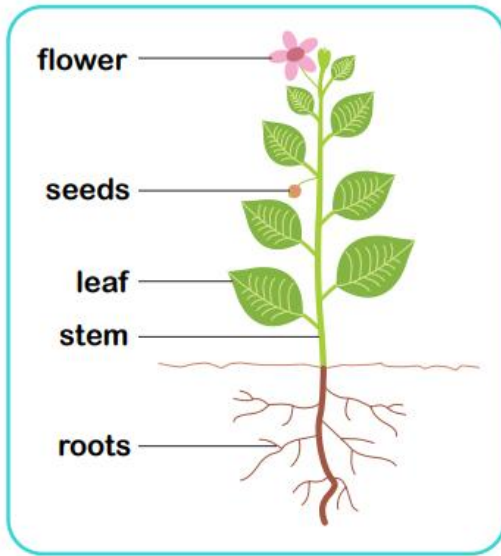
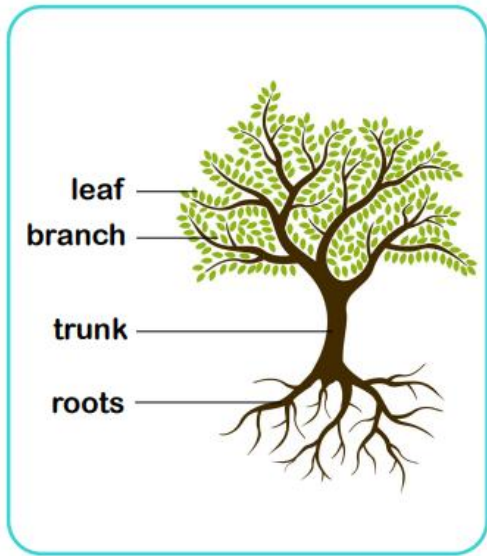
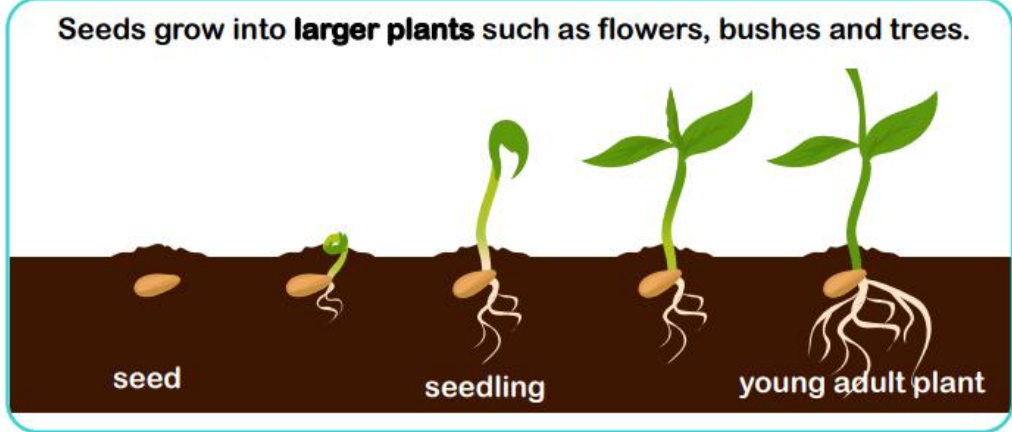

wildflower
 flowers that are
 not planted by a
 person



deciduous
 trees that drop
 their leaves
 every year



evergreen
 trees that keep
 their leaves all
 year round



Lesson 4 To make a representation of a leaf.
 How can I tell if a leaf is evergreen or deciduous?
 Look at leaves (TAPS Asst)
 (PLAN –Grouping and sorting. Use observations to suggest answers to questions) evergreen, deciduous, seasons, bush, branch

Lesson 5 Identify a variety of common wild and garden plants.
 Which plants are wild and which are garden?
 Identification key
 (DO: interpret and communicate)
 bluebell, daffodil, rose, daisy, nettle, cowslip

Lesson 6 Record the growth of a plant
 How do we know if our plant has grown?
 Measure and record plant growth
 (REVIEW: using observations and ideas to answer questions)
 Young plant, adult plant, seedling, growth, observe