



Fair test



research



observation

Animals inc humans



Pattern seeking



identify/classify

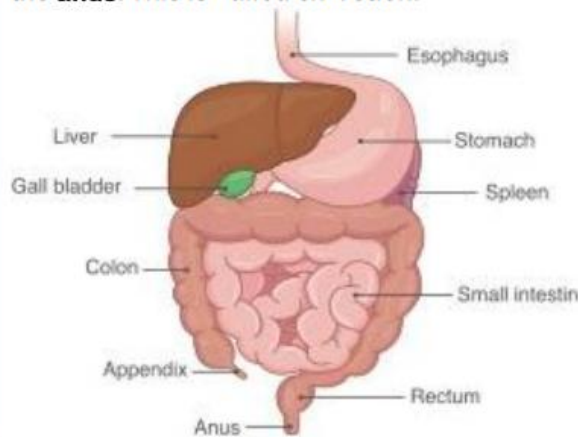


problem solving

What happens to food when we eat it?

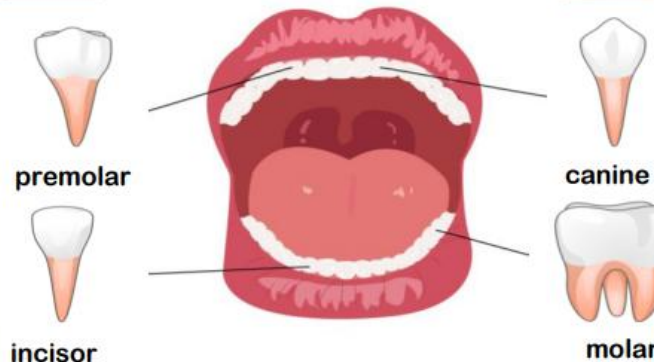
The Digestive System

- The digestive system begins with the **mouth** and **teeth** where food is ingested and chewed.
- Saliva is mixed with the food which helps to break it up.
- When the food is small enough to be swallowed, it is pushed down the **oesophagus** by muscles to the stomach.
- In the stomach, food is mixed further.
- The mixed food is then sent to the **small intestine** which absorbs nutrients from the food.
- Any leftover broken down food then moves on to the **large intestine**.
- The food minus the nutrients arrives in the **rectum** where muscles turn it into faeces (poo). It is stored here until it is pushed out by the **anus**. This is called excretion.



Careers connected to this topic: doctor, vet, dentist, physiotherapist, farmer.

Types of Teeth and their function

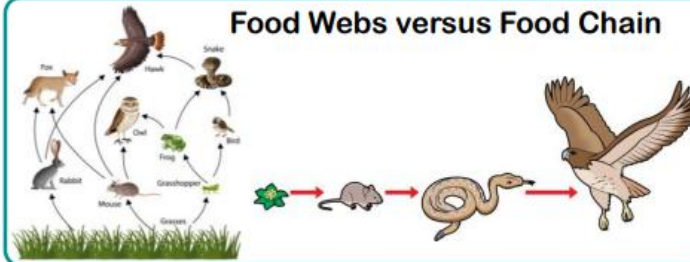


Different teeth have different functions
Teeth of animals are designed for the foods they eat

- **Herbivores** (e.g., horses) have little use for canines and mainly use incisors and molars
- **Carnivores** (e.g., Lion) mainly use canines and incisors, they don't have molars (have premolars – small molars)
- **Omnivores** (e.g., humans) use all three

Tooth enamel is the hardest substance in the human body
Humans have two sets of teeth; milk teeth and adult teeth

Food Webs versus Food Chain



Year 4

Autumn 1

Lesson 1 Identify the organs in the digestive system.

Can you label the different parts of the digestive system?

Digestive system measurements

Small intestine, large intestine, digestive system, oesophagus, stomach

Lesson 2 Understand the different function of each tooth

Why do we have different teeth?

Jaw, gum, molar, canine, incisor
Plaque, enamel, cavity, tooth decay, fluoride.

Lesson 3 explore the digestive system in humans

Can you explain the function of the different parts of the digestive system?

Gall bladder, absorb, saliva, liver, peristalsis

Lesson 4 investigate food chains.

Can you draw a food chain?

Consumer, producer, predator, prey, ecosystem

Lesson 5 explore food webs.

Can you explain the difference between a predator and prey?

Why are people cutting down rain forests and what effect does it have?

Tundra, threatened, interdependence, food web

Lesson 6

Double page spread.

Can you explain all you have learned from this topic?

Vocab-all words from previous

